

**SPEED RESTRICTION**  
 1. At the IAF, speed 210KT IAS or less.

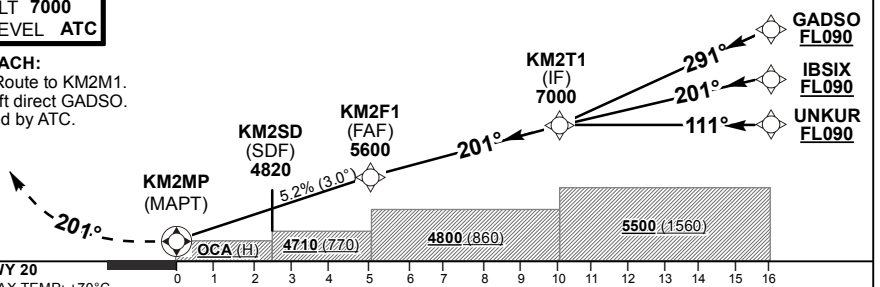
**Communication Failure Procedure (Squawk 7600)**  
 When cleared for the RNAV (GNSS) RWY 20 approach, complete the approach and land. If not yet cleared for the approach, continue to GADSO, and enter the hold at FL110. Hold for 5 MIN then descend to FL090 in the hold, then complete the approach and land.

<b>DIST (NM) to KM2MP</b>	5.1	5	4	3	2.6	2
<b>ADVISORY ALT(HGT)</b>	5600 (1660)	5590 (1650)	5270 (1330)	4950 (1010)	4820 (880)	4630 (690)

**TRANSITION ALT 7000**  
**TRANSITION LEVEL ATC**

**MISSED APPROACH:**  
 Climb to FL090. Route to KM2M1. At KM2M1 turn left direct GADSO. Hold or as directed by ATC.

**RDH 50**



**THR ELEV 3940**  
 NM to/from THR RWY 20  
 MIN TEMP: -10°C/ MAX TEMP: +70°C

		0	1	2	3	4	5	6	7	8	9	10	11	12	13	14	15	16
						4710 (770)		4800 (860)										5500 (1560)

Straight-in Approach		OCA (H)	A	B	C	D	GS	KT	80	100	120	140	160	180
									M:S	3:47	3:01	2:31	2:09	1:53
	LNAV ONLY	2.5%	5020 (1080)	5020 (1080)	5020 (1080)	5020 (1080)	KM2F1 to KM2MP	M:S	3:47	3:01	2:31	2:09	1:53	1:41
	LNAV/VNAV	4.4%	4540 (600)	4540 (600)	4540 (600)	4540 (600)		Rate of descent	FPM	425	531	638	744	850
	LNAV/VNAV	2.5%	4940 (1000)	4940 (1000)	4940 (1000)	4940 (1000)	<b>NOTE:</b>							
	VNAV	3.3%	4390 (450)	4390 (450)	4390 (450)	4390 (450)	1. RoD is 5.2%.							
	RVR		1500m	1500m	1800m	2000m	2. Turns prior MAPT prohibited.							
	ALS OUT		1500m	1500m	2000m	2000m	3. BaroVNAV operations not authorised below -10°C and MAX VPA 3.5° temperature +70°C.							
	Circling		4520 (570)	4620 (670)	5390 (1440)	5390 (1440)								

CHANGE: New Procedure